

# AMBER COLLINSON

## PORTFOLIO

### RIBA Part 1

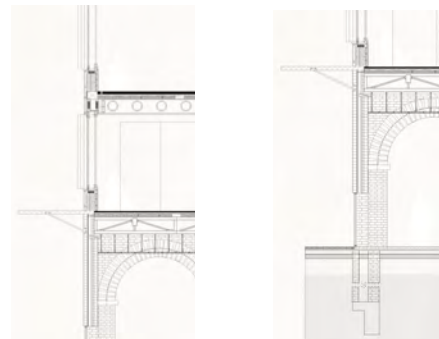
Flat 66, Clarence Gate Gardens, London, NW1 6QR  
amber.collinson@gmail.com  
+44 (0) 7528 161013  
collinsonarchitecture.com



## THE MAKERS METROPOLIS

BARKING

This project provides a place in Barking for a community of makers in East London to plant their roots and grow.



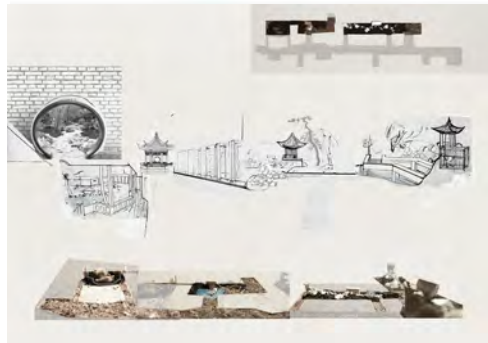
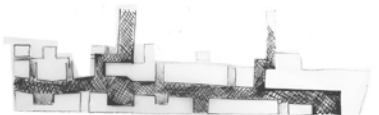
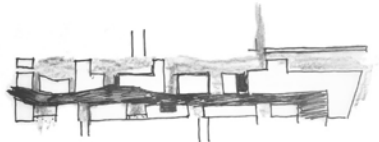
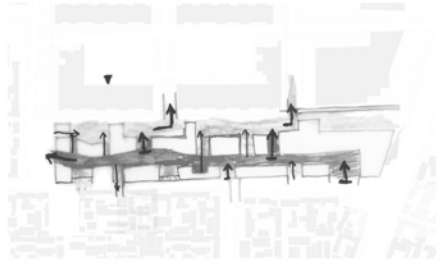
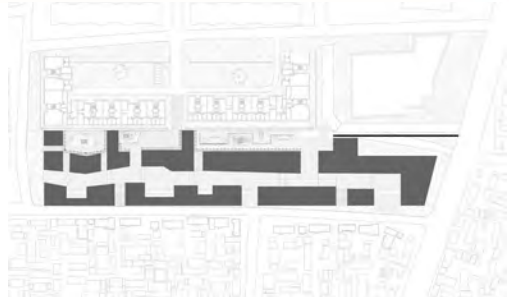




## Re-stitching the city

BEIJING

This is my current project which provides a place in Beijing for multi-generational housing which captures the intimacy of the hutongs whilst creating journeys, focusing on the urban gesture.



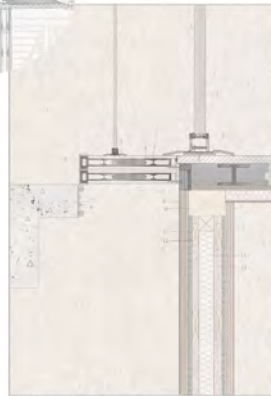
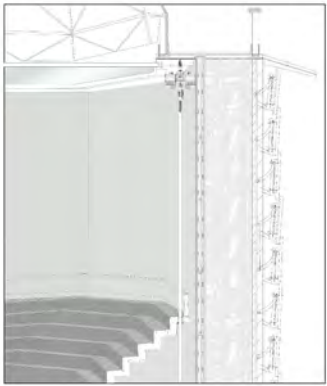




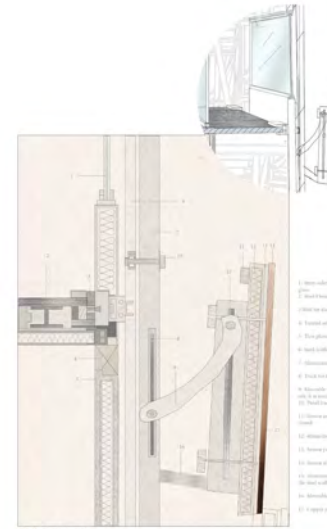
# THE WATCHTOWER

## DETAILS

Details showing how the building would be adaptable and protected from flooding, if sea levels were to rise.

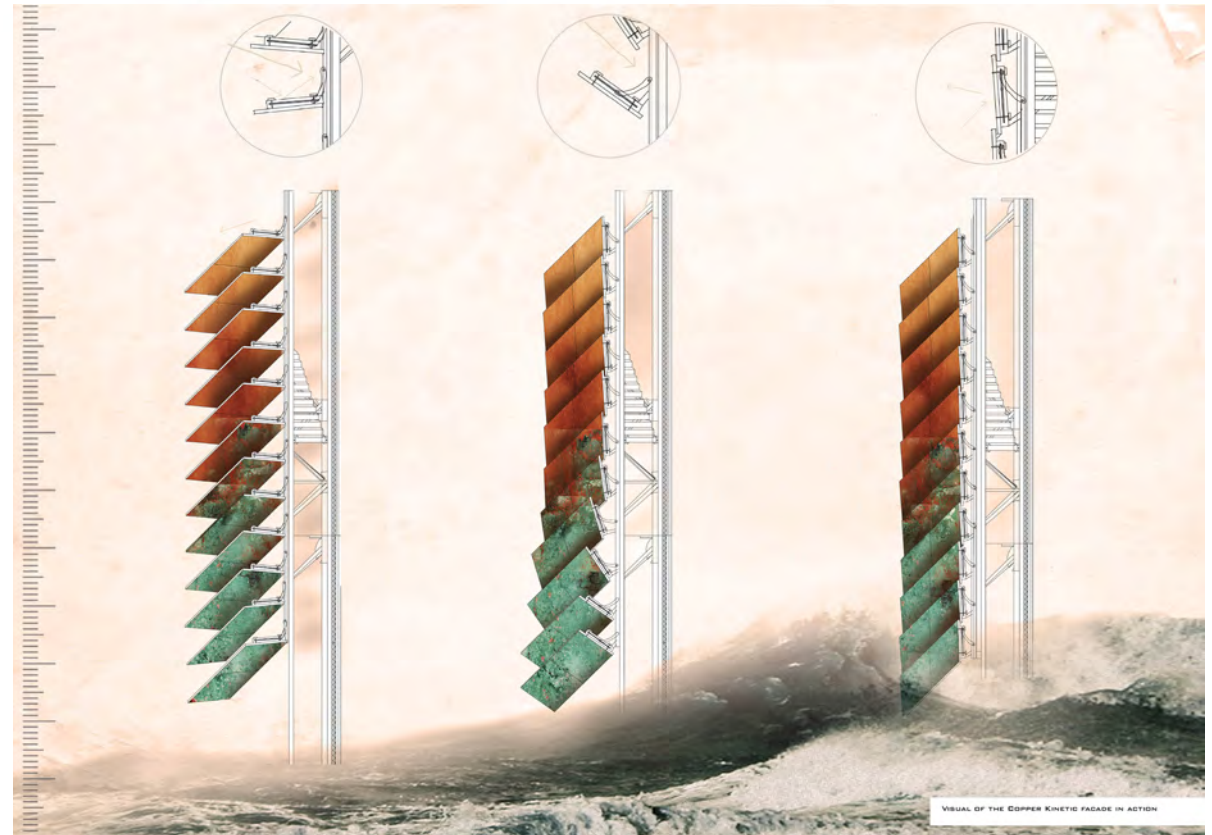
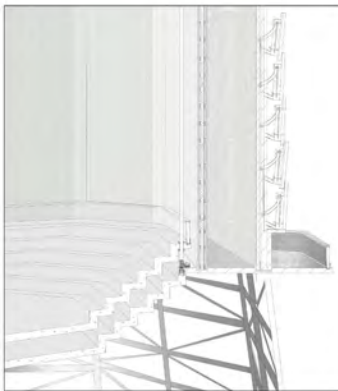


Detail 1a at 1:5 scale



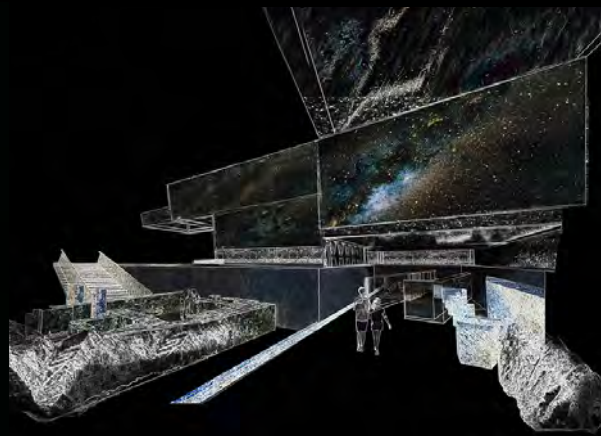
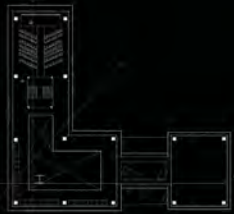
Detail 1b at 1:5 scale

1. Glass kinetic panel - 10mm thick glass - 10mm thick
2. Glass kinetic panel - 10mm thick glass - 10mm thick
3. Glass kinetic panel - 10mm thick glass - 10mm thick
4. Glass kinetic panel - 10mm thick glass - 10mm thick
5. Glass kinetic panel - 10mm thick glass - 10mm thick
6. Glass kinetic panel - 10mm thick glass - 10mm thick
7. Glass kinetic panel - 10mm thick glass - 10mm thick
8. Glass kinetic panel - 10mm thick glass - 10mm thick
9. Glass kinetic panel - 10mm thick glass - 10mm thick
10. Glass kinetic panel - 10mm thick glass - 10mm thick
11. Glass kinetic panel - 10mm thick glass - 10mm thick
12. Glass kinetic panel - 10mm thick glass - 10mm thick
13. Glass kinetic panel - 10mm thick glass - 10mm thick
14. Glass kinetic panel - 10mm thick glass - 10mm thick
15. Glass kinetic panel - 10mm thick glass - 10mm thick
16. Glass kinetic panel - 10mm thick glass - 10mm thick
17. Glass kinetic panel - 10mm thick glass - 10mm thick
18. Glass kinetic panel - 10mm thick glass - 10mm thick
19. Glass kinetic panel - 10mm thick glass - 10mm thick
20. Glass kinetic panel - 10mm thick glass - 10mm thick
21. Glass kinetic panel - 10mm thick glass - 10mm thick
22. Glass kinetic panel - 10mm thick glass - 10mm thick
23. Glass kinetic panel - 10mm thick glass - 10mm thick
24. Glass kinetic panel - 10mm thick glass - 10mm thick
25. Glass kinetic panel - 10mm thick glass - 10mm thick
26. Glass kinetic panel - 10mm thick glass - 10mm thick
27. Glass kinetic panel - 10mm thick glass - 10mm thick
28. Glass kinetic panel - 10mm thick glass - 10mm thick
29. Glass kinetic panel - 10mm thick glass - 10mm thick
30. Glass kinetic panel - 10mm thick glass - 10mm thick
31. Glass kinetic panel - 10mm thick glass - 10mm thick
32. Glass kinetic panel - 10mm thick glass - 10mm thick
33. Glass kinetic panel - 10mm thick glass - 10mm thick
34. Glass kinetic panel - 10mm thick glass - 10mm thick
35. Glass kinetic panel - 10mm thick glass - 10mm thick
36. Glass kinetic panel - 10mm thick glass - 10mm thick
37. Glass kinetic panel - 10mm thick glass - 10mm thick
38. Glass kinetic panel - 10mm thick glass - 10mm thick
39. Glass kinetic panel - 10mm thick glass - 10mm thick
40. Glass kinetic panel - 10mm thick glass - 10mm thick
41. Glass kinetic panel - 10mm thick glass - 10mm thick
42. Glass kinetic panel - 10mm thick glass - 10mm thick
43. Glass kinetic panel - 10mm thick glass - 10mm thick
44. Glass kinetic panel - 10mm thick glass - 10mm thick
45. Glass kinetic panel - 10mm thick glass - 10mm thick
46. Glass kinetic panel - 10mm thick glass - 10mm thick
47. Glass kinetic panel - 10mm thick glass - 10mm thick
48. Glass kinetic panel - 10mm thick glass - 10mm thick
49. Glass kinetic panel - 10mm thick glass - 10mm thick
50. Glass kinetic panel - 10mm thick glass - 10mm thick



VISUAL OF THE COPPER KINETIC FACADE IN ACTION





DESIGN 1 PERSPECTIVE VIEWS

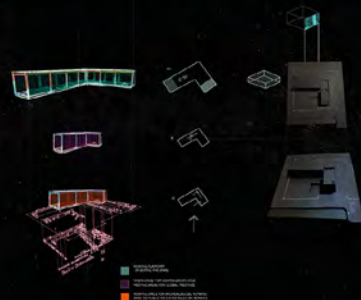


# THE COSMISTS LAB

DEPTFORD, LONDON

The International Institute for Cosmism (IIC) plan to construct a semi-enclosed building frame.

This building will a) announce and publicise their take-over of the dockyard site and their longer term plans to develop it and, b) provide workspaces for Cosmists and their collaborators, as they prepare for and oversee, future developments.

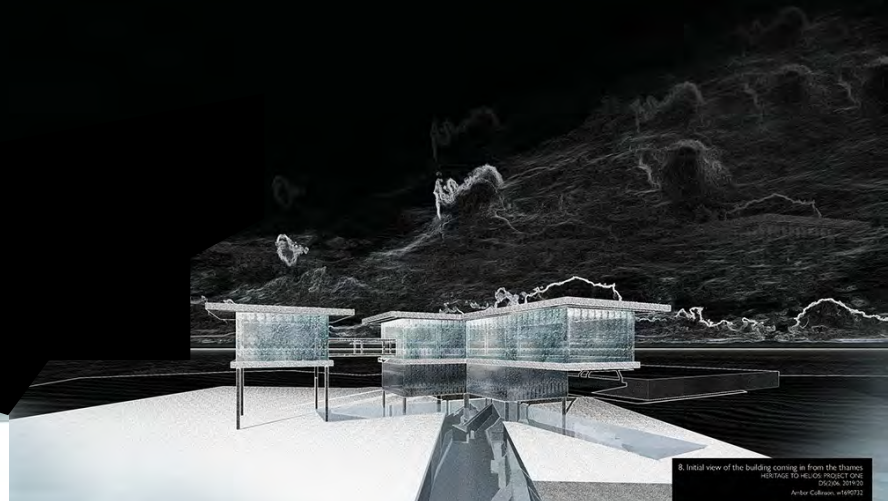
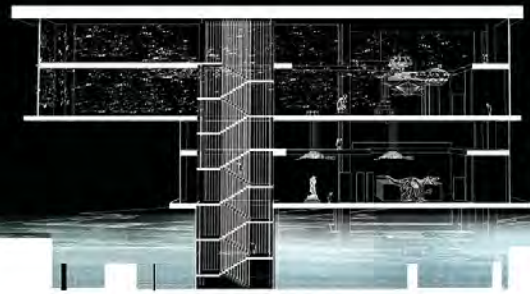


3. First design - floating work space frame  
reference: 'The Floating House' by  
2010, 2012  
Author: Catherine de Zeeuw



MODEL 1  
CORPORATE/HEALTH EXPERIENCE  
STRUCTURE  
BY THE  
CORPORATIONS FOR 5475 217 217  
217 217  
INTERNAL: BURN WOOD STAINED IN BLACK

4. A Merian frame in relation to the key features  
reference: 'The Merian House' by  
2010, 2012  
Author: Catherine de Zeeuw



8. Initial view of the building coming in from the Thames  
reference: 'The Floating House' by  
2010, 2012  
Author: Catherine de Zeeuw